



**Sustainability at the  
heart of our strategies.**

# Table of contents.

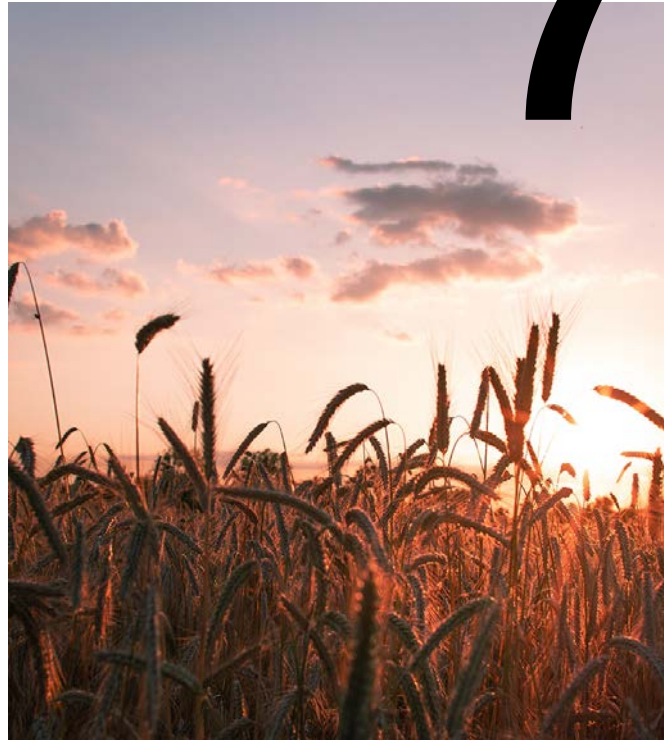
page

3



**Crédit Mutuel Asset  
Management**

7



**Responsible finance**

11



**Our expertise**



# Crédit Mutuel Asset Management.





# Key figures.

Figures as at 31 December 2021

€74bn

AUM

250

Asset management professionals

€53bn

Actively managed **open-ended funds**

'Our ambition: 100% of open-ended funds in active management classified as SFDR Art. 8 and 9.'



**ISAE 3402 Type II Standard** for Administrative, Accounting and Legal Activities

# Purpose

‘Listening and acting together’



---

1

## A committed player

We support our clients in their contributions and commitments to an ecological and energy transition that is equitable for all.

---

## Meaningful investments

Our ambition: ‘100% of open-ended funds in active management classified Article 8 or Article 9 according to SFDR regulations and Category 1 or Category 2 according to French regulation.’

2

---

3

## A passionate team

We are committed to providing you with access to our teams, managers and experts to deliver service as close to your aspirations as possible.

---

## Mutualist values

Solidarity, proximity and responsibility

4

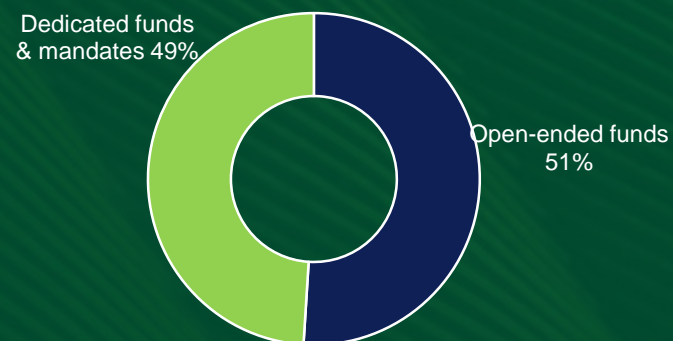


# Crédit Mutuel Asset Management.

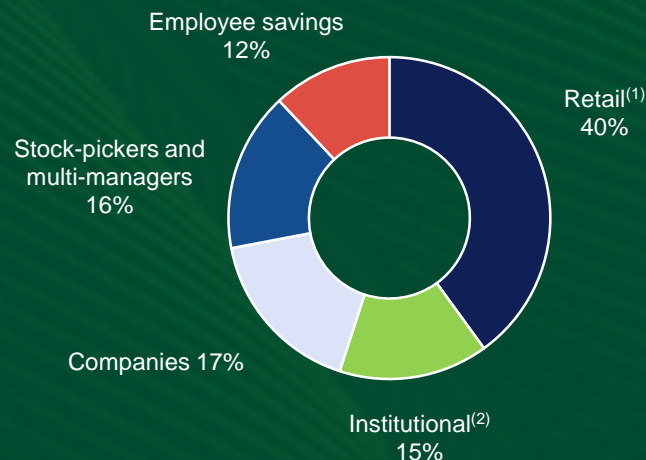
Asset Management Company of Crédit Mutuel Alliance Fédérale.

## AUM breakdown by investment

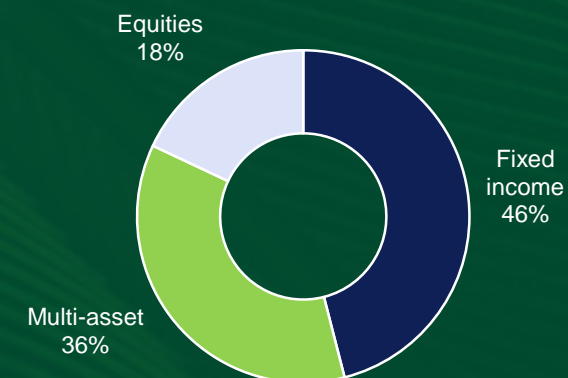
(excluding money market funds)



## AUM breakdown by customer base



## AUM breakdown by asset class



A complete range of funds that combine **simplicity and transparency**, based on **the balance** between **performance-seeking**, **risk** management and investment **sustainability**.

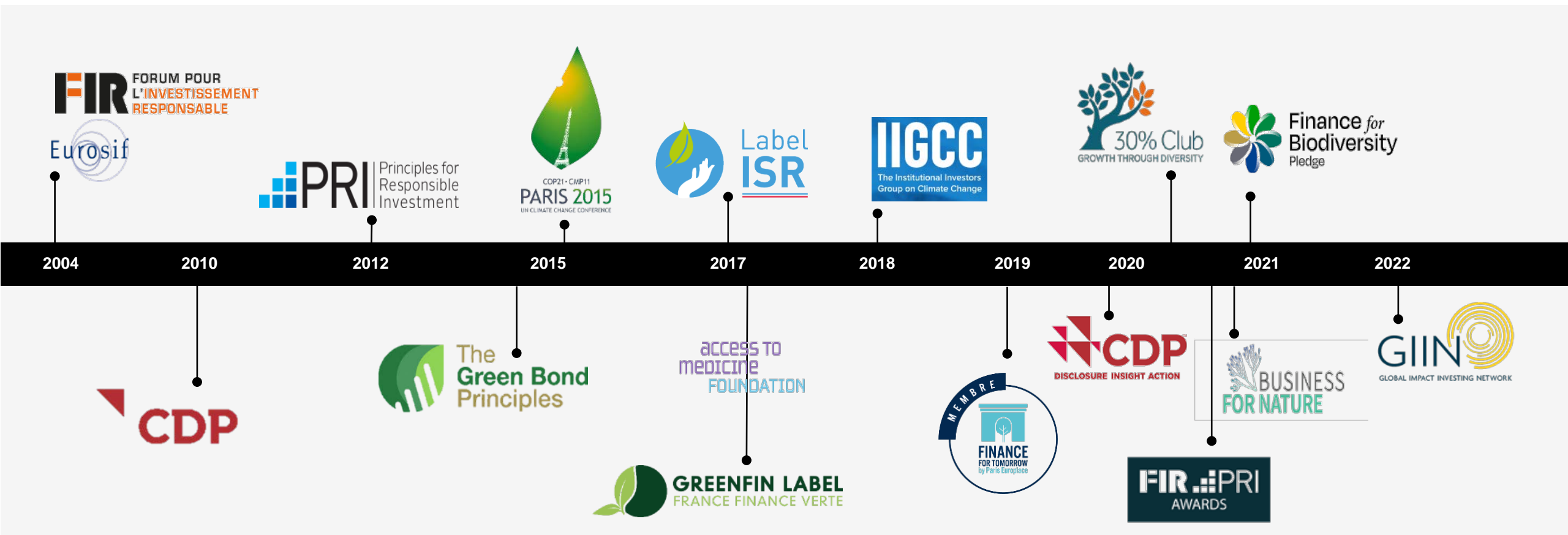


# Responsible finance.



# Responsible commitment.

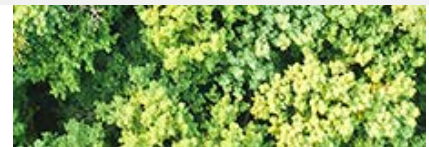
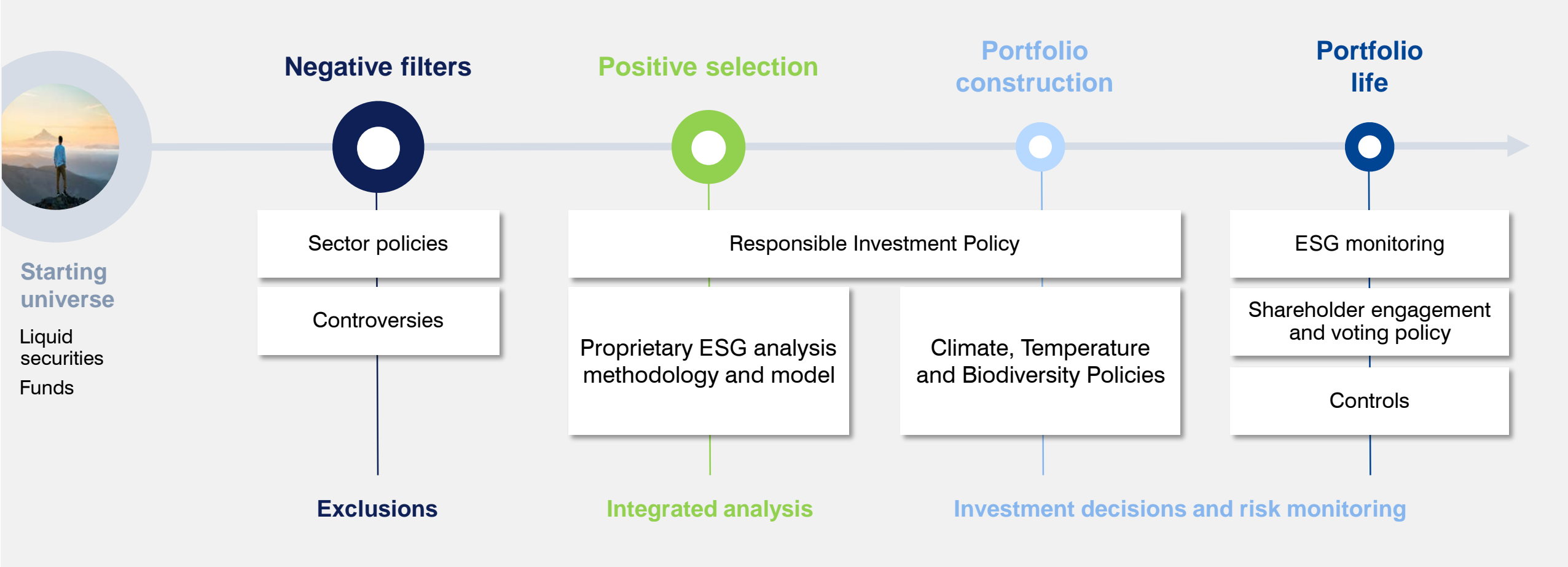
## Crédit Mutuel Asset Management is a committed player.





# From approach to the management process.

A commitment that impacts our management processes at all levels



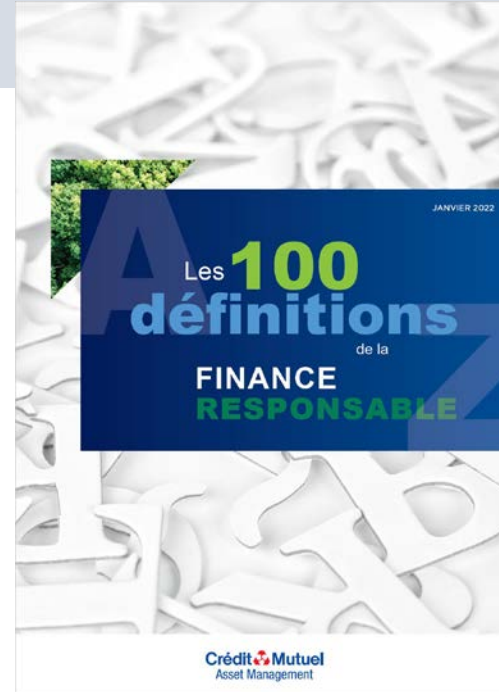
# Our contributions in 2021.



## White Paper

Release of the first three White Papers on: Hydrogen, biodiversity and CO<sub>2</sub> capture

*View all White Papers*



## Glossary

Publication of the first Responsible Finance glossary: 100 definitions of Responsible Finance

*Consult the glossary online*



## Articles

Responsible Finance Articles fortnightly

*Find the latest articles*





# Our expertise. In asset management



**‘Integrating the analysis of  
the responsible and  
sustainable finance division  
into all of our expertise.’**

## Equities Management

### European Equities

- European Mid & Large Cap strategies
- Growth & Value Style Strategies
- Environment theme, real estate theme

### Global equities

- Thematic management (strong brands, innovation, climate, emerging countries)
- Diversification strategies (gold, dividends)

### European Small & Mid Cap Equities

- European Small & Mid Cap strategies
- Employment theme, Entrepreneur theme

### Opportunity management

- Large Cap Europe & US Equities
- European Small & Mid Cap Equities
- Flexible PEA Management

## Fixed income management

### Money management and short term cash management

- MMF Cash
- Short term cash

### Fixed Income management

- Core Euro Allocation
- Global Allocation
- Performance solutions
- Income solutions

## Multi-Asset Management

### Profiled multi-asset management

- Global direct investment range
- Global fund of funds range
- Europe fund of funds range

### Flexible multi-asset management

- Flexible asset management
- Managed flexible management

## Quantitative management

- Formula-based funds
- Indexed funds
- Partial protection funds

## Employee savings

- Full range of multicompany FCPE employee shareholding funds
- Tailor-made solutions in dedicated FCPEs

# Management recognition in 2021.

◎ **Corbeille d'Or**  
5 year employee savings  
- MIEUX VIVRE VOTRE ARGENT

◎ **Trophée d'Or**  
3 Year Europe Equity Range  
- LE REVENU

◎ **Refinitiv Lipper Awards**  
CM-AM Pierre  
- REFINITIV LIPPER

◎ **Les Pyramides**  
CM-AM SME EQUITIES  
- INVESTISSEMENT CONSEILS

◎ **Globe d'Or de Gestion**  
European Small & Mid Caps  
- GESTION DE FORTUNE

◎ **Label Transparency**  
- AGEFI

◎ **Trophée d'Or**  
Diversified 3-Year Range  
- LE REVENU

◎ **50 Management Companies**  
Key asset management company  
- OPTION FINANCE FUND MAGAZINE



# Crédit Mutuel Alliance Fédérale.

**First bank to adopt the status of mission-oriented company: listening and acting together**

## Group business lines

Crédit Mutuel Alliance Fédérale is the combination of a cooperative bank and a bank with historically significant involvement with large and medium sized enterprises.

- Banks
- Insurance
- Asset Management and other investment services

## Diversified client base

The group offers all its financial services to a diversified customer base:

- General public and wealth management clients
- Business and Professionals
- Private Banking
- Institutional and large companies

## Ratings.

	Standard & Poor's as at 16/12/2021	Moody's as at 10/12/2021	Fitch Ratings as at 17/11/2021*
LT/ST counterparty**	AA-/A-1 +	Aa2/P-1	AA-
Issuer/ Preferred senior LT	A+	Aa3	AA-
Outlook	Stable	Stable	Negative
Preferred senior ST	A-1	P-1	F1+
Intrinsic Rating***	A	A3	A+

\* The Issuer Default Rating is stable at A+.

\*\* Counterparty ratings correspond to the ratings of the following agencies: Resolution Counterparty by Standard & Poor's, Counterparty Risk Rating by Moody's and Derivative Counterparty Rating by Fitch Ratings.

\*\*\* Intrinsic rating refers to Standard & Poor's Stand Alone Credit Profile (SACP); Moody's Adjusted Baseline Credit Assessment Fitch Rating (Adj. BOA); and Fitch's Viability Rating.

Standard & Poor's: Crédit Mutuel group rating

Moody's: Crédit Mutuel Alliance Fédérale/BFCM and CIC rating

Fitch Ratings: Crédit Mutuel Alliance Fédérale rating



# Mission-oriented company

Figures as at 31 December 2021

**‘Crédit Mutuel Alliance Fédérale puts its performance at the service of its corporate customers and the territories. Behind the raw data, there is a strong and steadily growing group.’**

**Crédit Mutuel and CIC**

Winners of the 2021 Bank Awards\*

**72,000**  
Employees

**27.9**  
Million clients

**1,052**  
Billion euros of capital under management and custody

**53.2**  
Billion euros of equity and SSS\*\*

**4,500**  
Points of sale in 40 countries

